

CAROUSEL

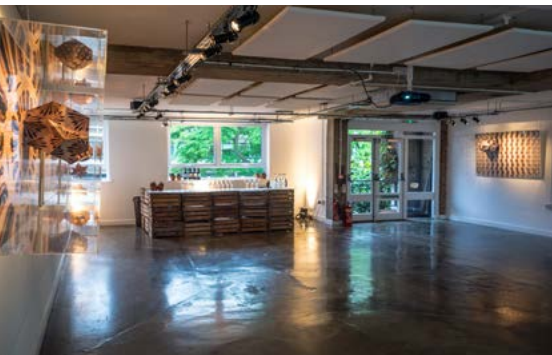
**71 Blandford Street
Marylebone W1U 8AB**



@CarouselSpaces

www.carouselspaces.com

info@carouselspaces.com



Welcome to Carousel

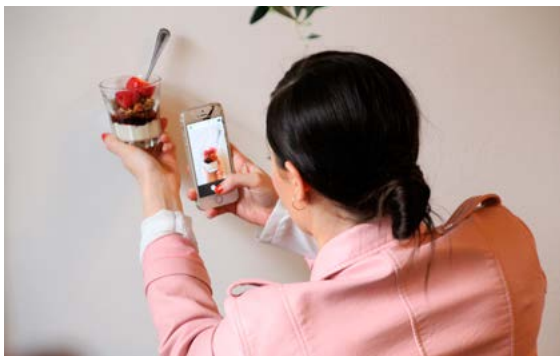
A unique events venue in the heart of Central London split across two buildings and five beautifully designed floors, each with its own distinctive character.

Press events, meetings and presentations, brand activations, parties, weddings and workshops...Carousel's ultra-flexible, blank canvas spaces can accommodate events of all different shapes and sizes, dry hire or bespoke.

Carousel's industrial warehouse feel makes it a unique venue for the area - we're just a few minutes' walk from both Baker Street and Bond Street tubes in well heeled Marylebone - and unlike conventional dry hire event spaces, we're able to offer a wide range of additional extras, all done in-house to the highest standard, thoughtfully and creatively.

Whatever your brief or budget, we have the passion, the know-how and the spaces to make your event unforgettable.

Just let us know your requirements and our dedicated events team will put a quote together for you.



Upstairs



Ideal for daytime and evening events for up to 100 guests.

Inspired by minimalist Scandinavian design - complete with polished concrete floor, white walls and clean lines - Upstairs at Carousel is a light and airy room with windows on two sides and a handmade feature table as its centrepiece.

The table seats 30 but take it away and there's room for 80 seated theatre-style and 100 standing.

Alternatively, if it's a sit-down dinner you're after, we can accommodate up to 60 guests on our beautiful tables handmade from reclaimed wood.

The room also comes with high-spec AV equipment, high-speed Wi-Fi and a dedicated duty manager, making it the perfect venue for conferences, off-sites and away-days.

With a flexible lighting rig and a neutral interior, the room is equally ideal for press days, art exhibitions, photo-shoots and private parties.

Hiring our Upstairs space also gives you access to our leafy, south-facing garden so it's perfect for summer events too.



Theatre Style
80 max



Cabaret Style
48 max



Boardroom
30 max



Sit Down
60 max



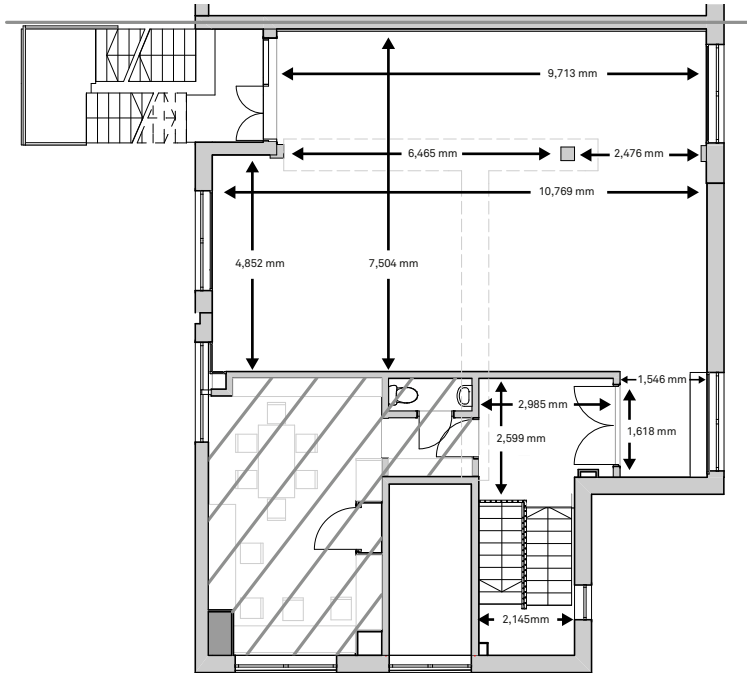
U-Shaped
35 max



Standing Reception
100 max

Event Space: 80m sq. / 861ft sq.

Ceiling Height: 2.63m / 8.63ft



Please note: all measurements are approximate.

Features and Equipment

Private Entrance / Versatile Partition Wall System / Gallery Hanging System
Directional Lighting Rig / 4000 LUMEN Projector / 17 mbps WiFi
Multichannel Inbuilt Stereo System / Blackout Blinds / Boardroom Table for 30 People / Pop-Up Bar



Downstairs



Ideal for brand activations, parties and events for up to 180 guests.

Downstairs at Carousel is a vast and versatile space with an industrial, warehouse-style finish that's tailor made for large-scale events - think high ceilings, polished concrete flooring and moody lighting.

Kitted out with its own professional kitchen, flexible lighting rig, high-spec AV equipment, pop-up bar, WCs and room for 110 seated or 180 standing, it's the ideal hire space for private parties, basement banquets, brand activations, robot wars (yes, robot wars) and just about anything else you can think of.

You'll be hard pressed to find a venue like it this side of Liverpool Street.



Theatre Style
80 max



Cabaret Style
70 max



Boardroom
38 max



Sit Down
110 max



U-Shaped
55 max

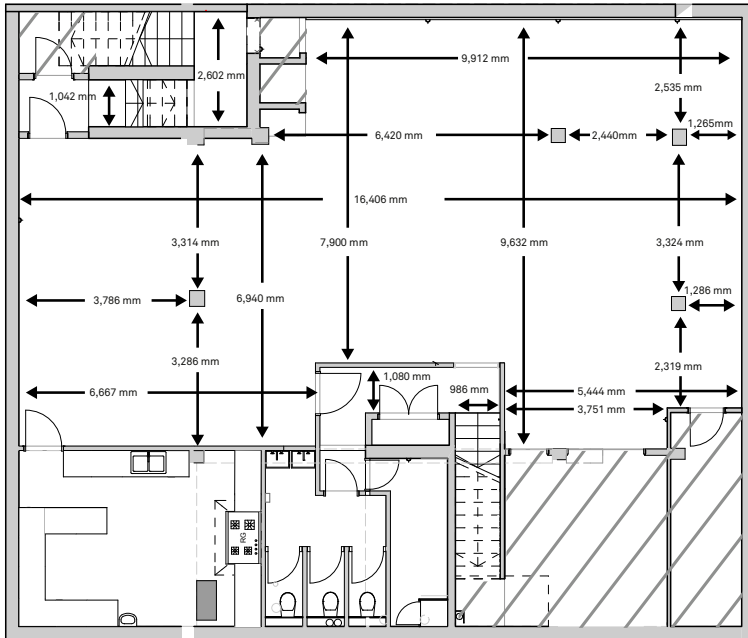


Standing Reception
180 max

Downstairs

Event Space: 134m sq. / 1,442ft sq.

Ceiling Height: 3.03m / 9.94ft



Please note: all measurements are approximate.

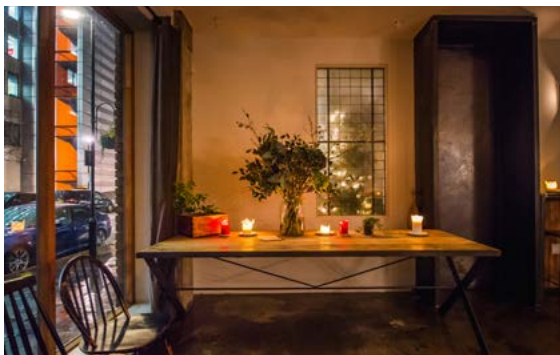
Features and Equipment

Event Space: Private Entrance / Versatile Partition Wall System / 3x WCs / Cloakroom Rails / Directional Lighting Rig / 4000 LUMEN Projector / 17 mbps WiFi / Multichannel Inbuilt Stereo System / Pop-Up Bar with Drinks Fridges

Professional Kitchen: Dual Sink / 6-Burner Gas Stove / 3kw Convection Oven / Double Fridge / Dishwasher / Glasswasher



Restaurant



Ideal for networking breakfasts, private dinners and events for up to 80 guests.

Floor to ceiling windows, polished concrete flooring and striking communal tables made from mild steel and reclaimed wood.

Our internationally acclaimed restaurant has pioneered the guest chef trend in London, attracting stellar talent from as far away as Sydney, Mexico City and Reykjavik as part of our on-going series of fortnightly residencies.

Open to the public for lunch and dinner every Tuesday to Saturday, the restaurant is, however, available for private hire with a bit of advanced notice. With an open kitchen, guests can watch the chefs in action so it's the perfect space for a breakfast event or a private dinner. It also has access to our leafy south-facing garden, making it an ideal venue for summer parties and drinks receptions.



Sit Down
40 max
(+ 10 at the bar)

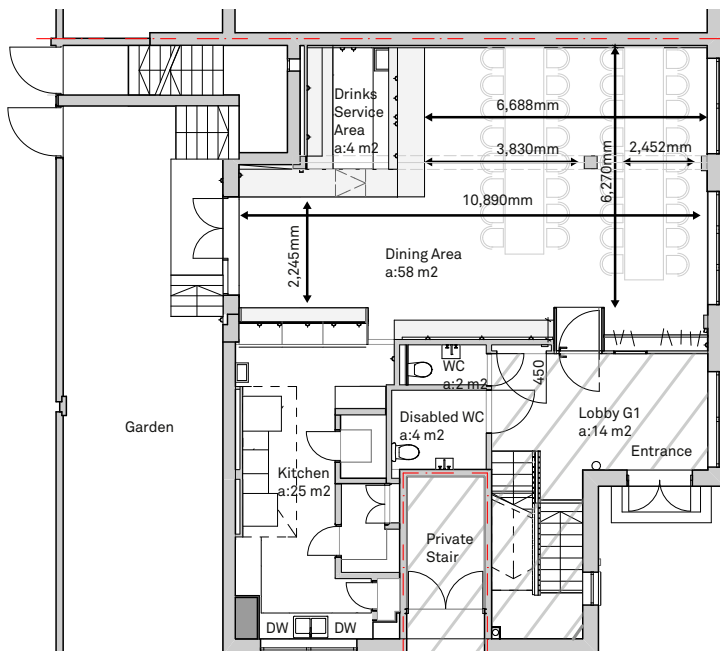


Standing Reception
80 max

Restaurant

Event Space: 97m sq. / 1,044ft sq.

Ceiling Height: 2.84m / 9.3ft

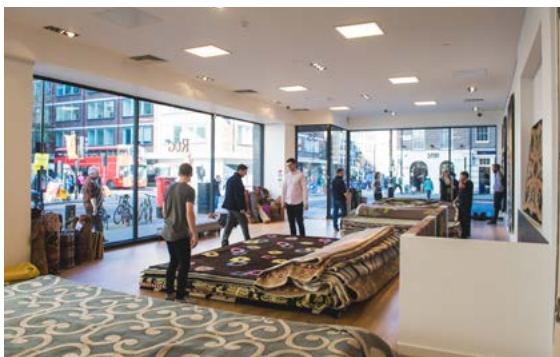


Please note: all measurements are approximate.

Features and Equipment

Event Space: Entrance Hall / 2 x WCs / Fully Fitted Bar / 4 Large Wooden Tables / Cloakroom Rail / Directional Lighting Rig / 17 mbps WiFi / Multichannel Inbuilt Stereo

Professional Kitchen: Dual Sink / 6-Burner Gas Stove / Combi Steam Oven / Charcoal Grill / Walk-In Fridge / Dishwasher / Glasswasher



Next Door



Ideal for pop-up retail, brand activations and events for up to 300 guests

Offering 3,300 sq. ft. of high-footfall, high-visibility retail and event space right on Baker Street, Carousel: NEXT DOOR is the dream venue for your next concept store, fashion show, product launch, sample sale, art exhibition or pop-up café...

With floor-to-ceiling windows at street level, elegant wooden floors throughout and clean white walls, it's an ultra-flexible blank canvas space that can accommodate up to 300 guests at a time. And with neighbouring Carousel just a few yards away, you can also add all of our award-winning food and drink, staffing and production into the equation.

Split over two floors, the venue also benefits from ample storage and back-of-house facilities, including its own kitchen and WCs. So all in all, we've got your event covered.

35 Baker Street, W1U 8EN

Ground Floor



Theatre Style
150



Sit Down
160



Standing Reception
250

Lower Ground Floor



Theatre Style
150



Sit Down
80

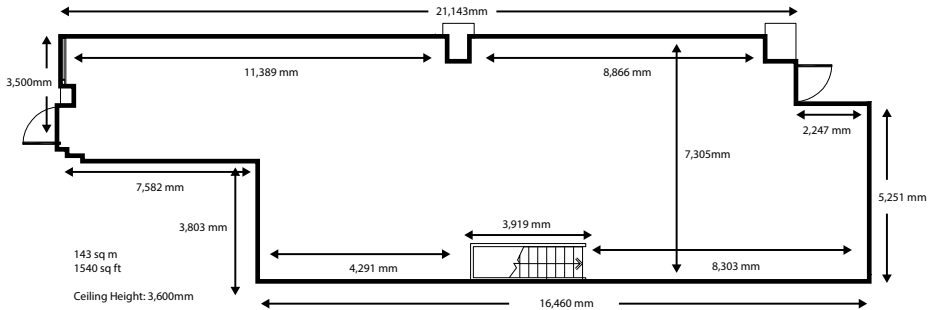


Standing Reception
120

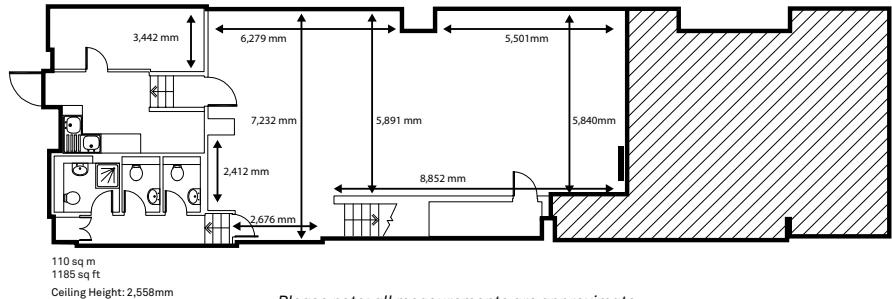
Event Space: 253m. sq / 2,725ft. sq

Ceiling Height: 3.6m (ground) / 2.558m (lower ground)

Ground Floor



Lower Ground Floor



Please note: all measurements are approximate.

Features and Equipment

Private Entrance / Versatile Partition Wall System / Gallery Hanging System / Bar / 3 x WCs / Small Kitchen



Carousel isn't just a dry hire space - we also specialise in restaurant-quality food, cocktail consultancy and creative events production.

Dry hires are just the tip of the iceberg - Carousel's food and drink offering is where we really come into our own.

Head chef Ollie Templeton (ex-Moro) loves to get creative, splitting his time between curating our internationally acclaimed line-up of guest chef residencies and designing mouth-watering menus of his own that are bursting with big flavours and locally sourced, seasonal ingredients. The result? Imaginative, restaurant-quality food, created with your event in mind.

But exceptional catering is just one of any number of add-ons you can choose from.

Events production, cocktail consultancy, AV and lighting design, live music and DJs... We've got it covered, in-house, which helps keep the costs down.

Just let us know your requirements and we'll put together a quote for you.

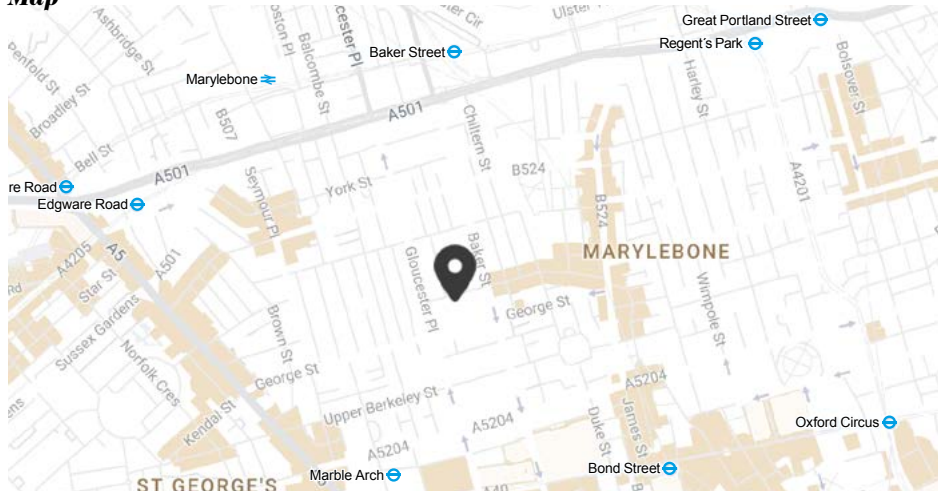


Enquiries

To book one of our unique spaces or to arrange a quote for a private event, drop us an email or just give us a call on the number below.

T: +44 (0)20 7487 5564 / E: info@carouselspaces.com

Map



Getting Here

We're just a five-minute walk from Baker Street (Circle, District, Hammersmith & City, Metropolitan, Bakerloo and Jubilee Lines), Bond Street (Central and Jubilee Lines) and Marble Arch (Central Line).

Heathrow Airport is half an hour away door-to-door, via the Heathrow Express from Paddington Station.

71 Blandford Street, Marylebone, London, W1U 8AB
T: 020 7487 5564
E: info@carouselspaces.com